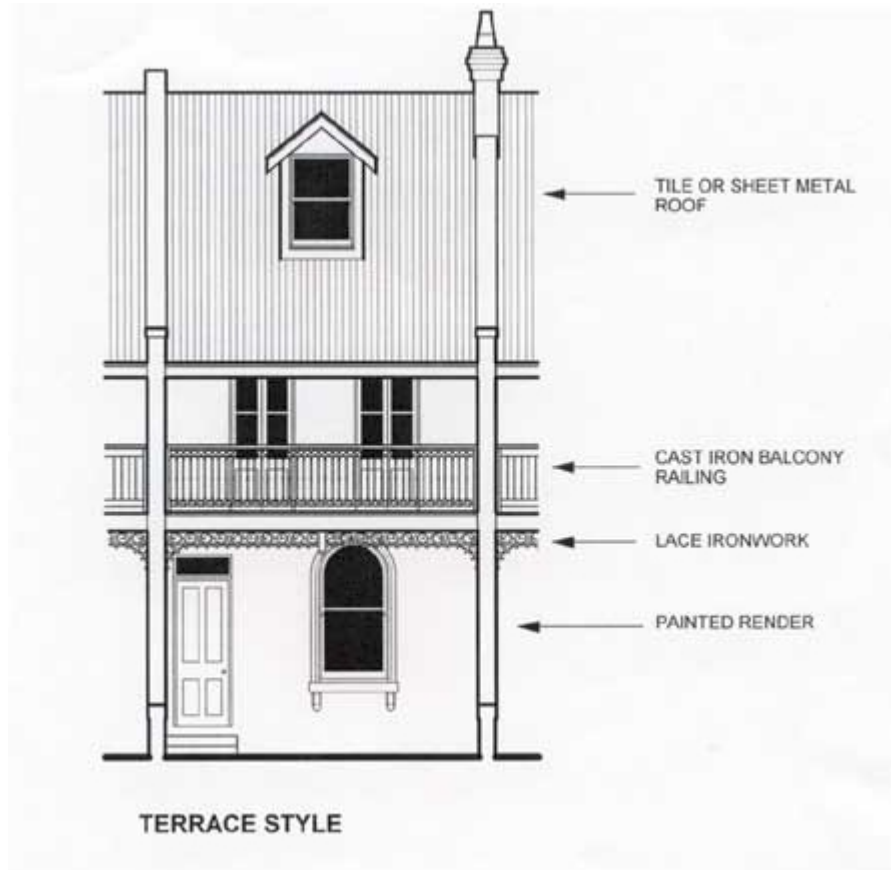


Housing Style

The Victorian Terrace

Victorian Terraces were originally constructed in the pre-Federation era (1901), in inner city locations in rows of varying lengths. They were Australia's first form of medium density housing and were popular with the working class, with wealthier members of society living in detached Victorian styled houses.



A typical Victorian Terrace is characterised by being narrow with two storeys. Architect David Gray suggests it may have a side entrance, small front verandah and a balcony off the upper level made of cast iron. Victorian Terrace's walls are usually fairly solid as the only way of keeping them waterproof at the time was to render and paint the walls.

The steeply pitched roof on a terrace was originally made of slate tiles, but with deterioration over time, many slate roofs have been replaced with aluminium or terracotta tiles. Gray also notes that a major feature of the roof was, and often still is, the ornate chimney. He says that some Council's today require owners to retain

the chimney in the roof, even if they remove the fireplace, to maintain an attractive skyline.

According to Gray, the ground floor of a Victorian Terrace usually consists of two separate living and dining areas that open into each other, with two fireplaces that are the focal point in each room. The service areas such as the kitchen, bathroom and laundry are often found towards the rear. Gray says the bedrooms and bathroom are usually found on the upper level and many terraces often had a traditional outhouse out the back.

Positive Features

Once a fairly inexpensive form of housing, terraces have become hugely popular in the last 30-40 years. Gray believes this is to do with their inner city locations and compact nature. They are an alternative to apartment city living and have lower outdoor maintenance than many typical suburban homes. Gray says they are carefully sized and are usually sturdy structures.

Renovation Potential

A great selling point of Victorian Terrace's is their everlasting appeal and continued flexibility. Typical renovations of terraces, according to Gray, usually begin with the service areas such as the kitchens, bathrooms and laundry. Gray believes these are areas that don't transform as easily to the needs of modern lifestyles as well as other rooms such as bedrooms and living areas. Renovating the kitchen and bathroom areas also allows the owner to personalise the terrace and transform it into their own space.

Other common renovations that can be applied to the terrace include converting the roof space into a functional attic, establishing indoor and outdoor connections with the rear courtyard or creating access and accommodation for motor vehicles.