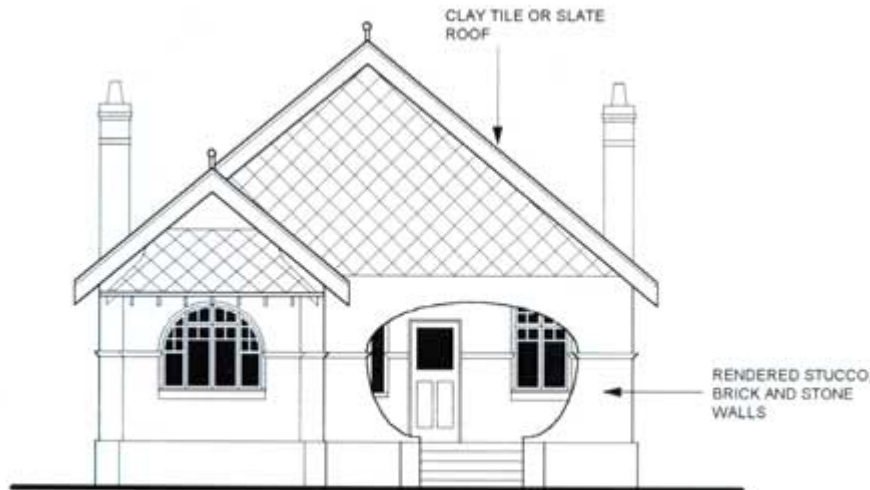


Housing Style

The Arts & Craft Era

The early twentieth century (1910-1920) saw a return to romantic notions, with leading Australian Architects designing houses of high quality craftsmanship and old fashioned values, in opposition to many of the mass produced styles of the time.

According to Registered Architect Rena Czaplinska-Archer, Arts and Craft style residences have cottage type feel, with a simplicity to them. They are often set in the grounds of a rambling garden and are they are informal in nature, as opposed to the more structured and formal layout and look of other heritage style properties such as the Victorian or Colonial styles.



ARTS AND CRAFTS STYLE

They have an asymmetrical appearance and feature an array of elaborate decorative features such as bay windows, motifs, carved posts, leadlight windows and more. The roof of an Arts and Craft style house originally had a clay tile or slate roof with ornamental brackets, corbels and chimneys.

The Arts and Craft style often had a front porch and a back veranda, with typical construction materials consisting of rendered stucco, brick and stone walls. This type of property often suited an attractive garden setting to complement its picturesque design features.

The internal layout of this type of house design was not particular to the style, however generally they were single storey and included large fireplaces, views of the garden from many rooms, floral walls and often featured large servant rooms.

Positive Features

Arts and Craft style homes have a number of unique features. Firstly they are one of the most picturesque housing styles of their era. If they are well maintained and kept in good condition, they present extremely well.

Secondly, Arts and Craft residences are generally very well built and sturdy structures that are well suited to families, having good sized gardens, an informal and easy going style and being located in family friendly areas that used to be know as 'garden suburbs'.

Renovation Potential

Arts and Craft style properties lend themselves well to renovation. Czaplinska-Archer believes that the solid brick construction of the style makes a sound foundation for renovations to take place. As the Arts and Craft house style often has small windows and high eaves making some areas quite dark, common renovations popular for today's lifestyle include opening up the layout to let in the natural light, improve circulation and further enhance the informal nature of the style.