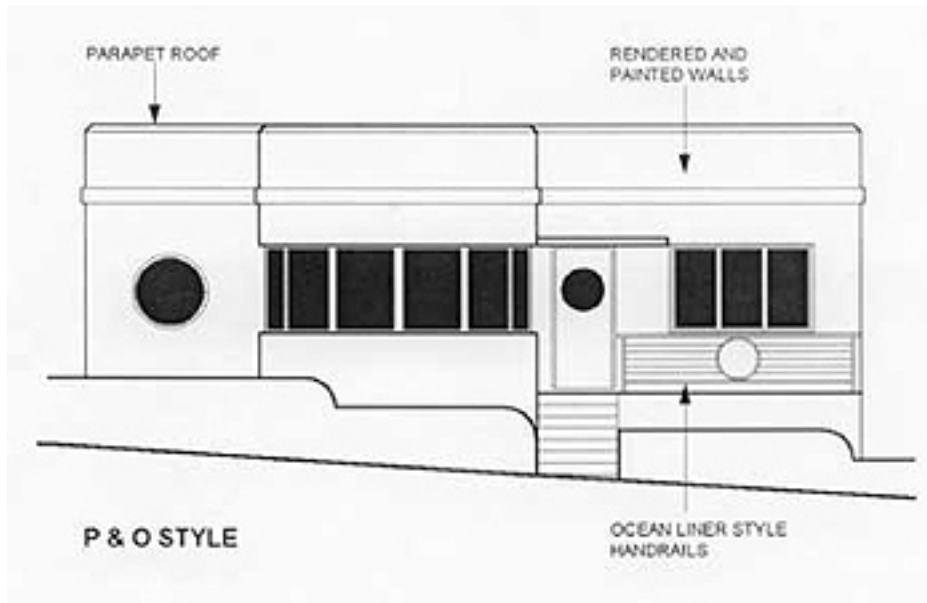


# Housing Style

## The P&O Home

The post depression era in Australia saw a shift in people's lifestyles towards a more modern, industry driven culture which was reflected in many architectural styles of the time.



Homes began to be designed around appliances in the home and industrial products once reserved for commercial and industrial buildings only, were now available to be used in residential housing construction.

One style that made particular use of these products, was the P&O style home. As the name suggests, the style was built after the grand ocean liners and represented a freedom from the repression of the years of war.

The style was incredibly different to any style Australian suburbia had ever seen before and stood out from its traditional styled counterparts. It had a distinctly nautical theme, with clean, ship-shape lines, curved walls, porthole windows, funnel shaped steel framed windows and extended sundecks.

The roof of these houses were either flat and sealed with bitumen or hidden behind parapet walls. The exterior walls were typically cement rendered in a white or cream smooth finish and possibly featured exposed lines of blonde or other light coloured brick. On occasion these houses were also often adorned with Art Deco geometrical motifs etched into the glasswork.

Internally, the streamline look was continued, with plain architraves replacing the more traditional and elaborate mouldings that were previously used. The rooms of a P&O style home typically opened out into one another, with the whole house generally designed to be more efficient and compact to suit the modern, appliance-reliant lifestyle.

### Positive Features

P&O style homes are visually unique and often sit atop hills or garages and in some cases have access to views other more low to the ground styles may not be able to reach. They are generally fairly solid structures and are relatively low maintenance, with the major housekeeping item being the repainting and touch up of the light coloured exterior paintwork.

The P&O style is also popular for its open plan living arrangement and it is one of the better designed homes in regards to access to light and cross ventilation.

### Renovation Potential

According to Architect Hal Pannell, the P&O style house lends itself well to renovation, particularly first floor additions. The flat roof is an advantage, but depending on the construction material of the roof, it would require assessment of its ability to support the extension.

In keeping with its nautical theme, Pannell suggests that the addition should be narrower than the base (tiered) and have an external balcony to take advantage of potential views.

Although the P&O style has good access to light, its ground floor layout is often reworked to be more in tune with the modern lifestyles of today, such as the emphasis on indoor/outdoor connections and external entertainment areas.